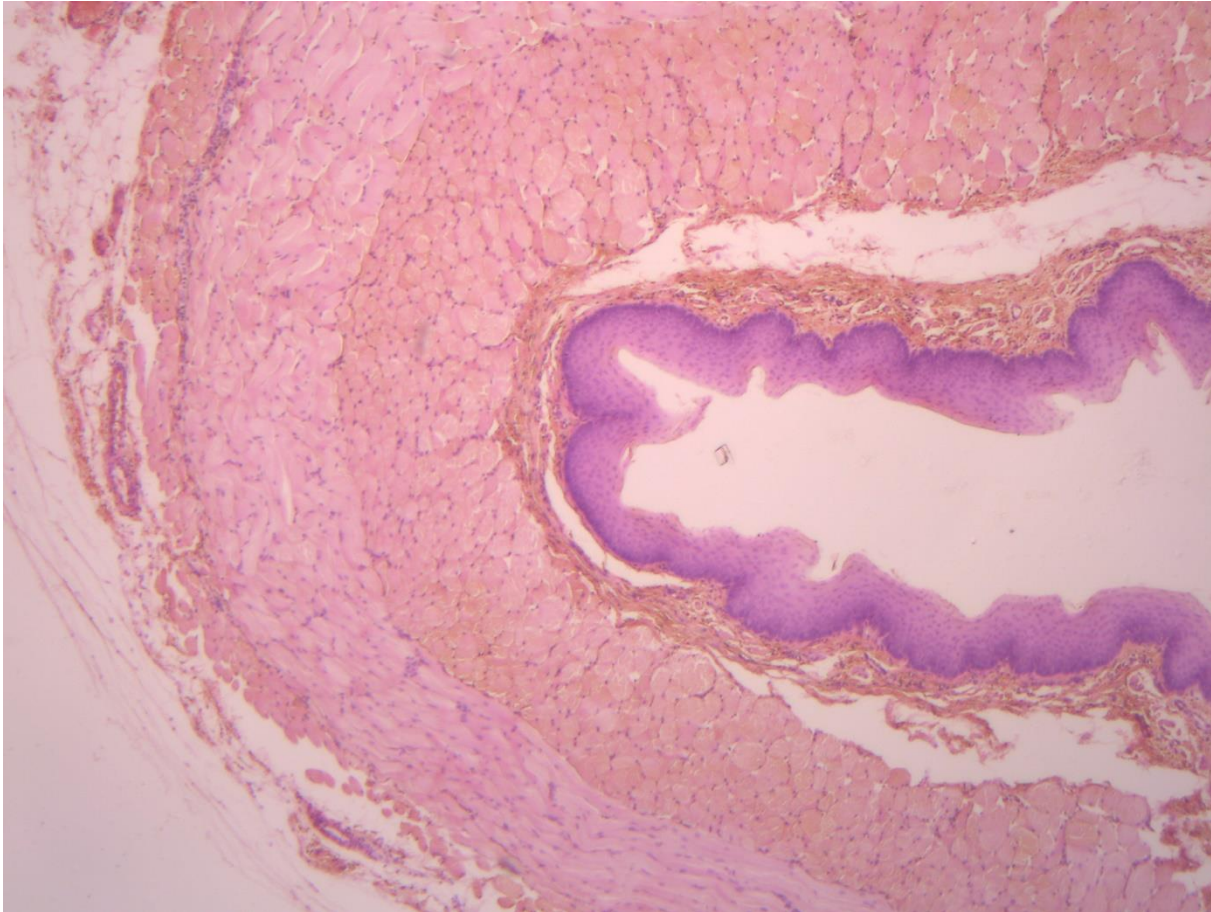


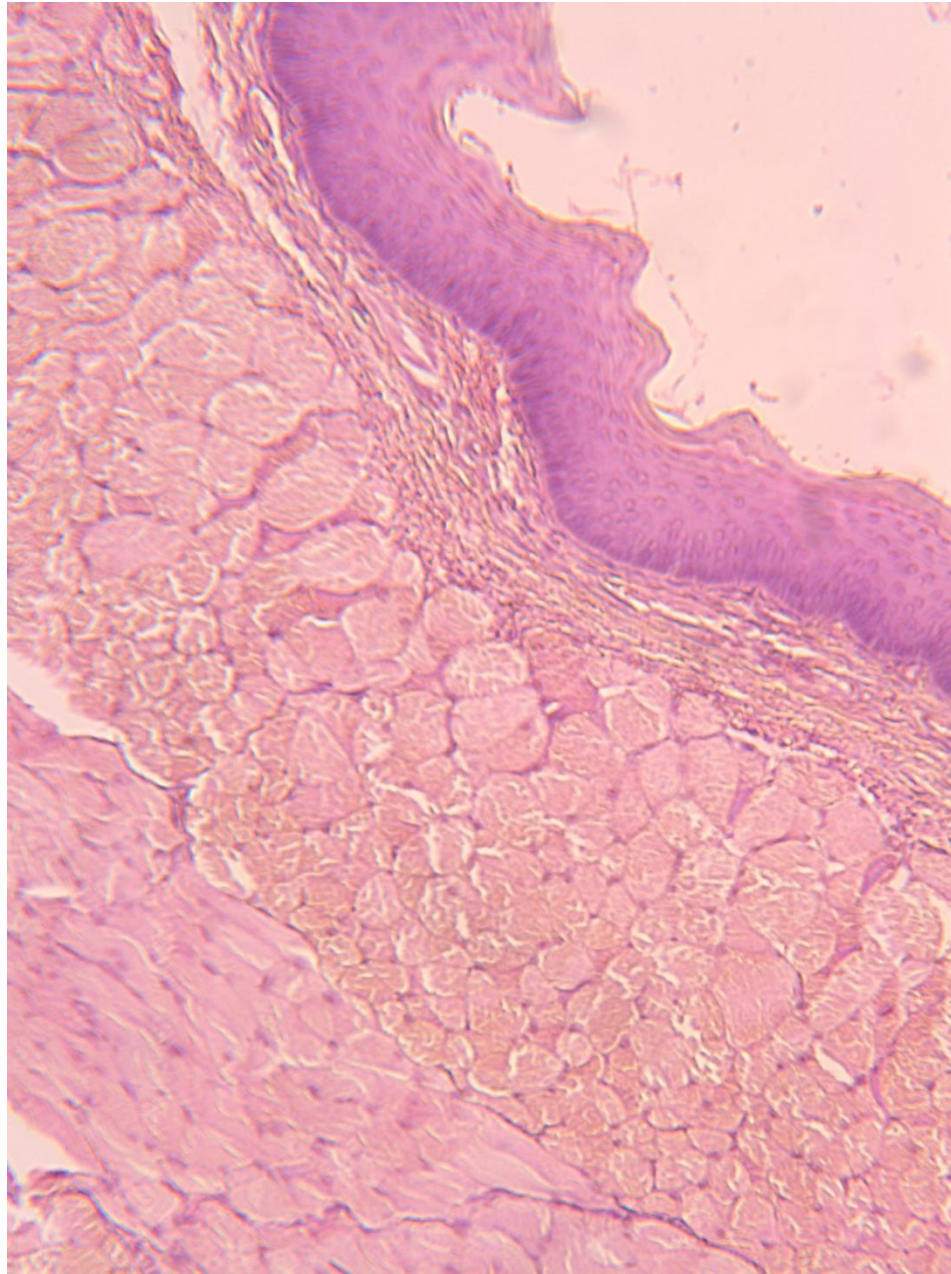
Trachea and Esophagus (low power)



Esophagus (medium power)



Esophagus (high power)



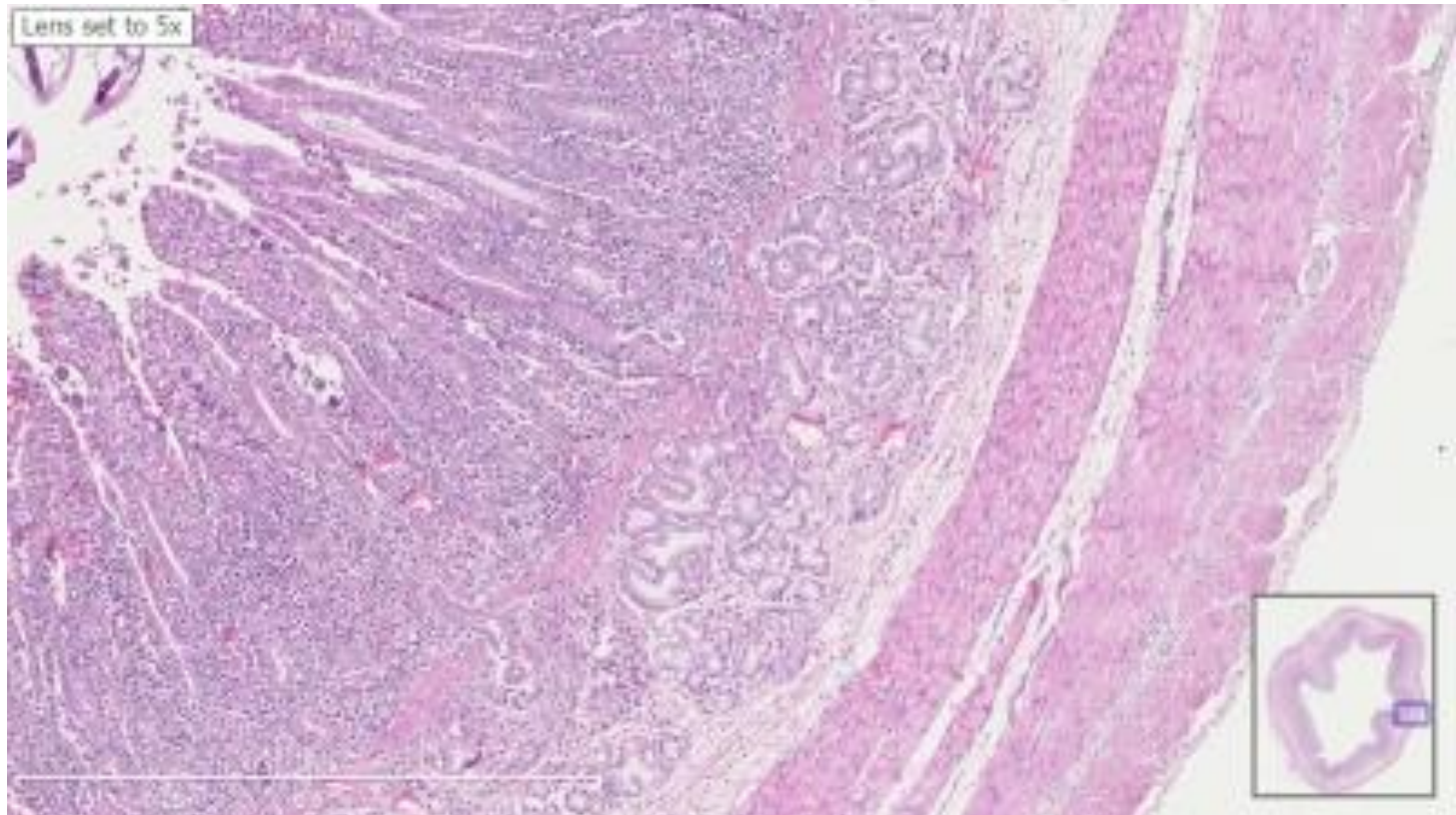
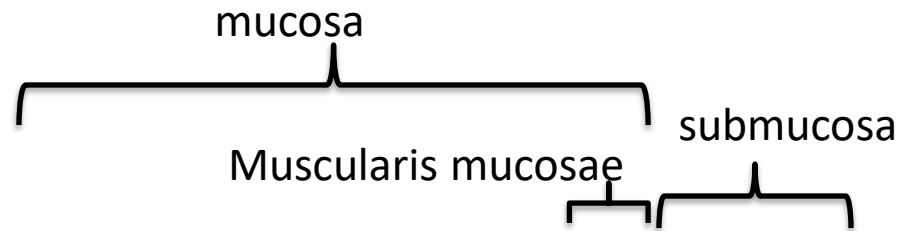
Outer
Longitudinal
layer

mucosa

submucosa

Inner circular
Layer

Small intestine

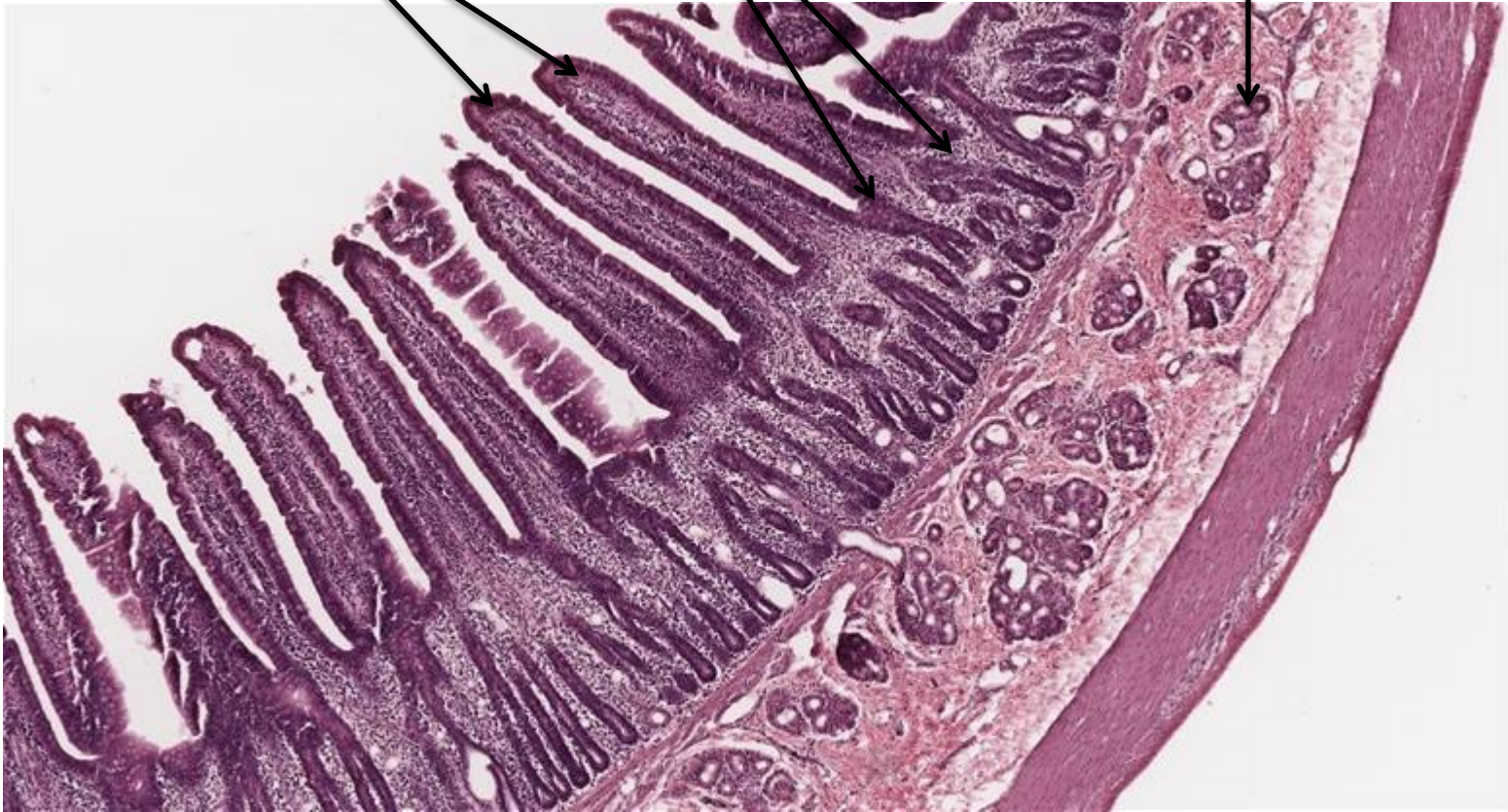


Small intestine

villi

Intestinal crypts

Submucosal
gland

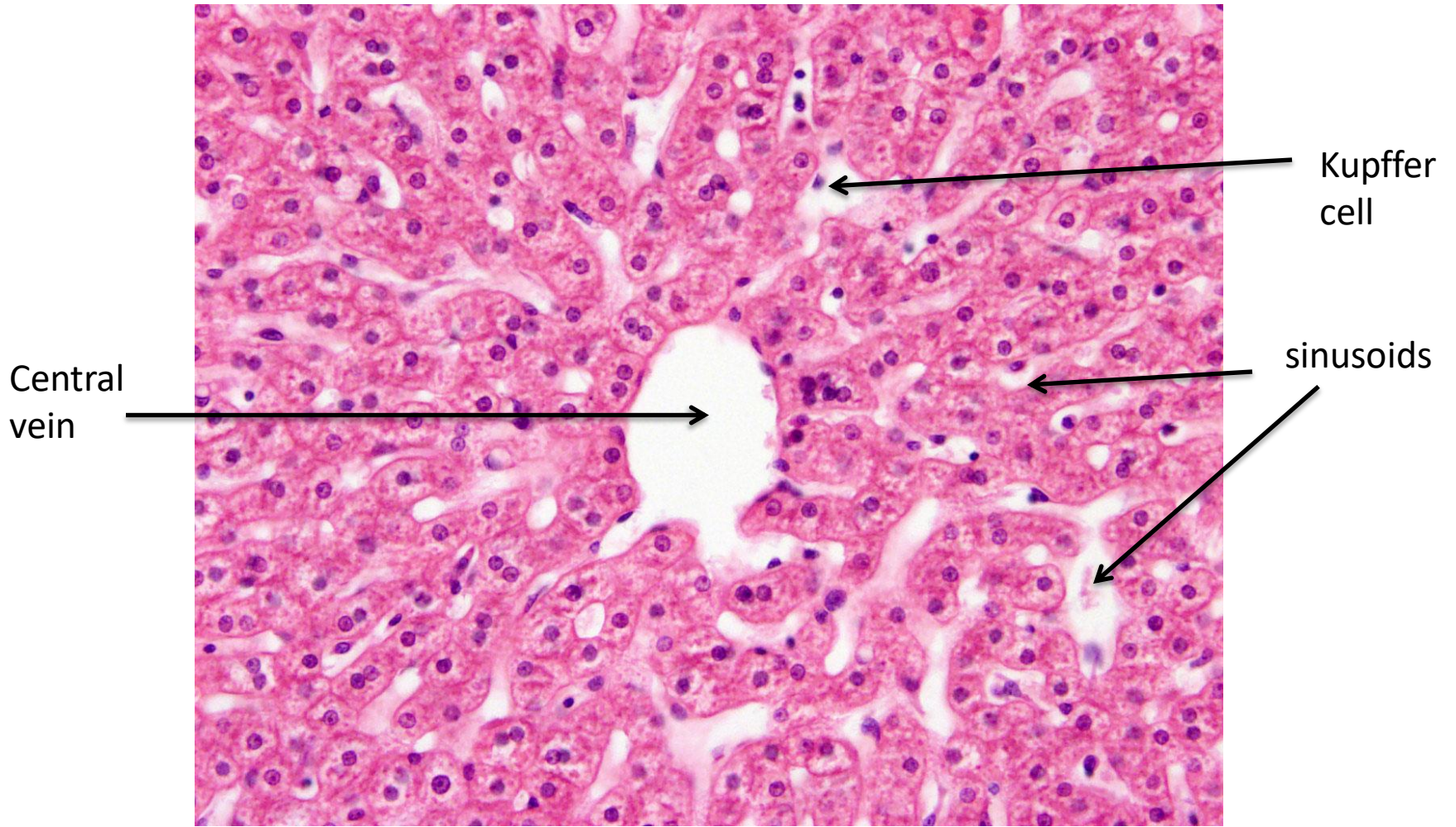


Pig liver lobules (low power)

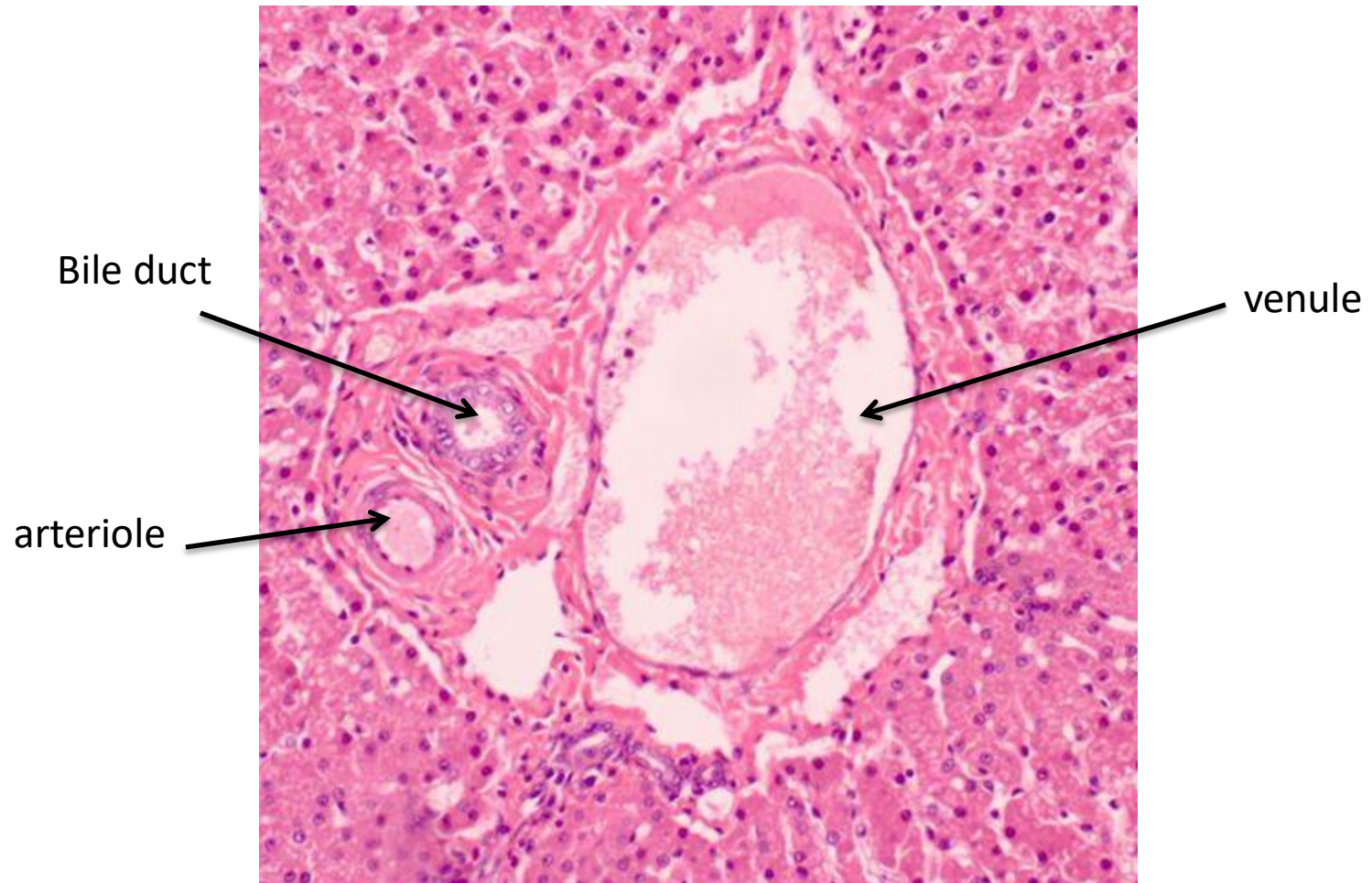
Central
veins



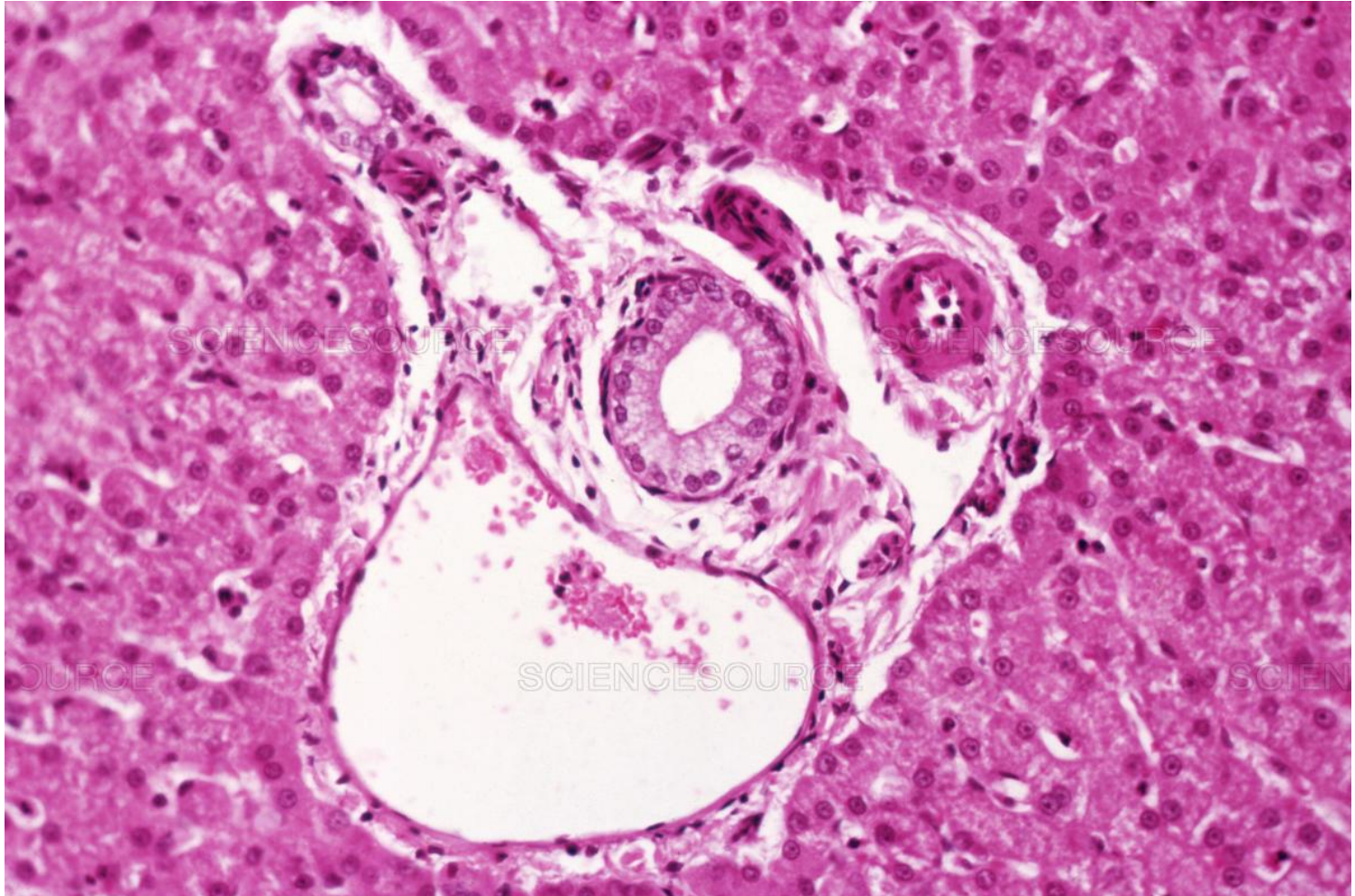
Liver lobule (high power)



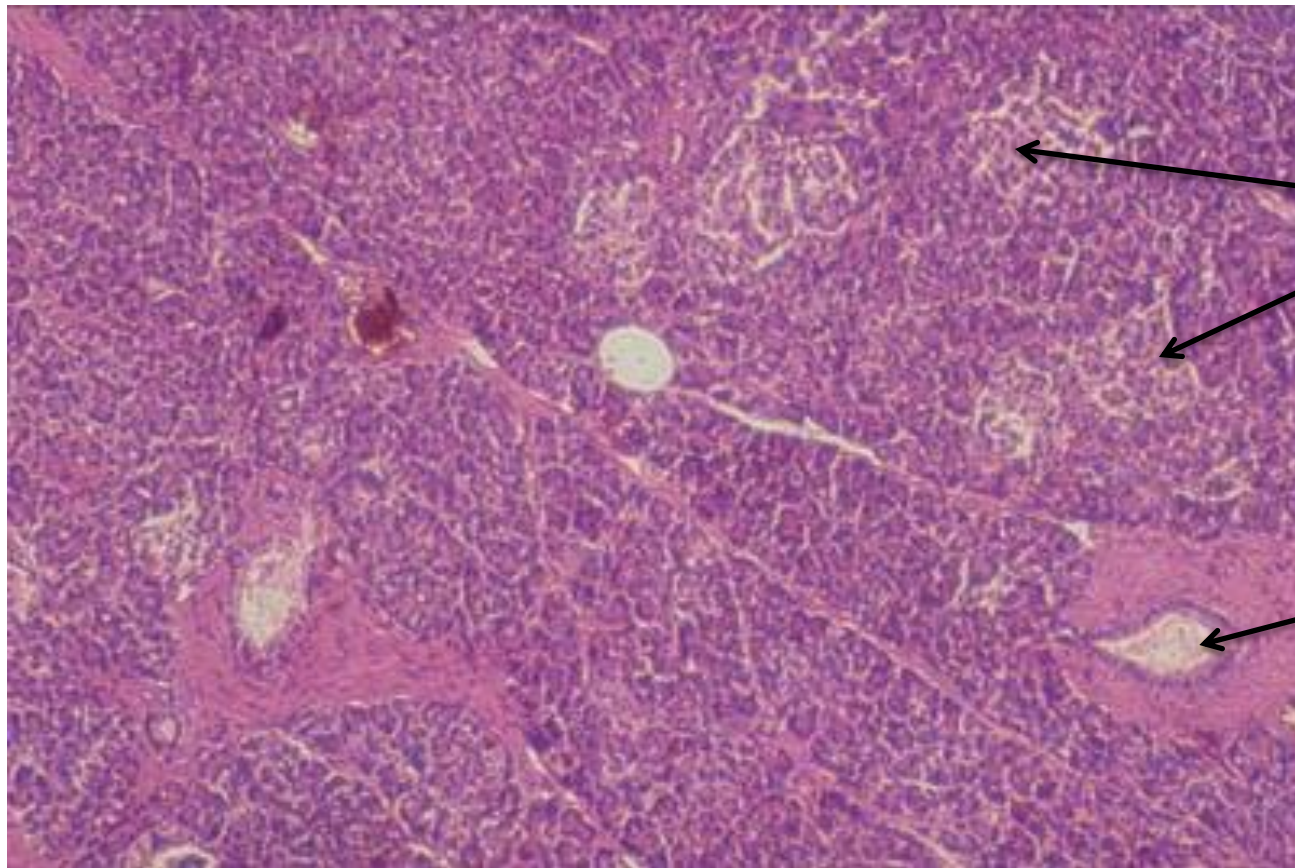
Hepatic (portal) triad (high power)



Hepatic (portal) triad (high power)



Pancreas (low power)



islets

Pancreatic
duct

Pancreas (high power)

