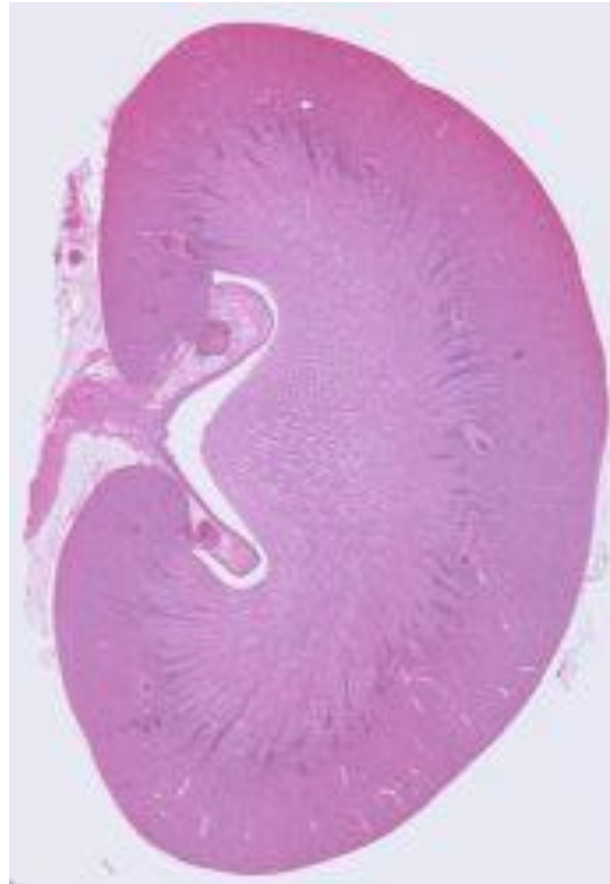
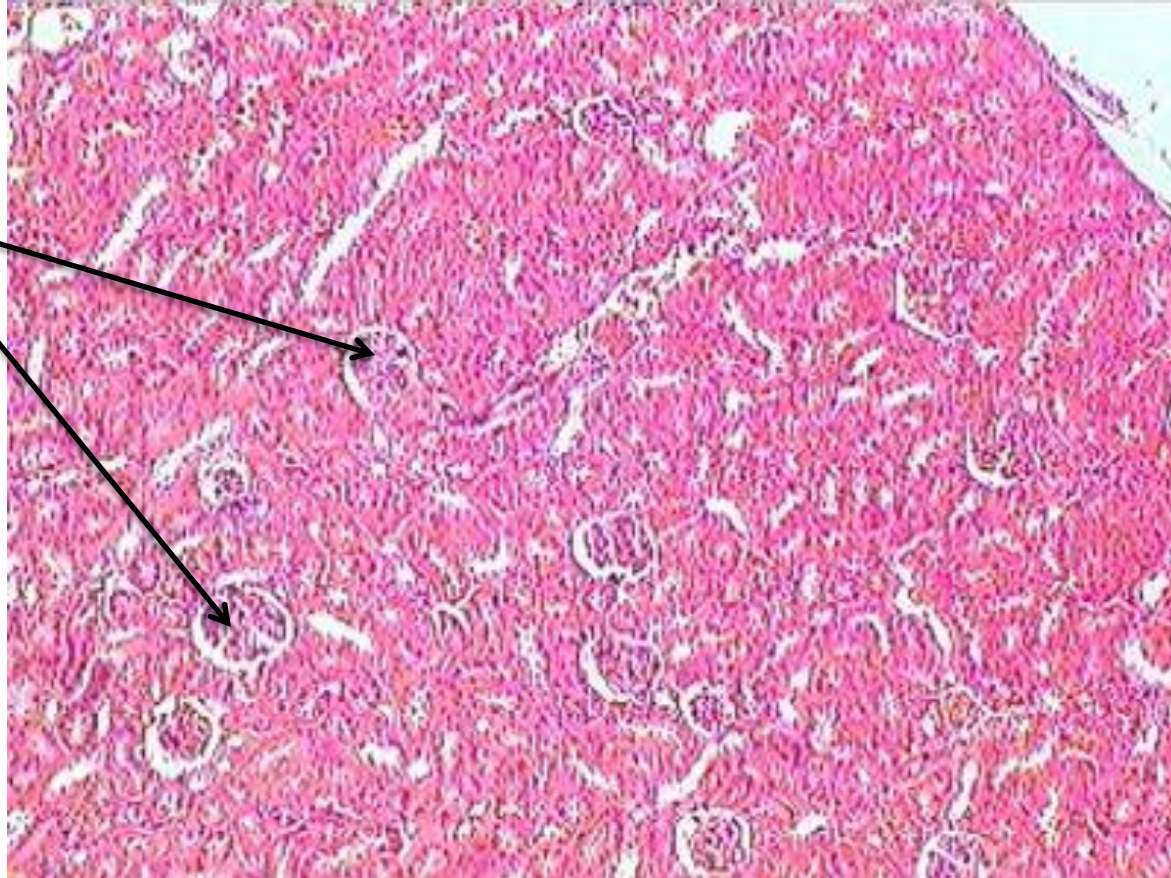


# Kidney

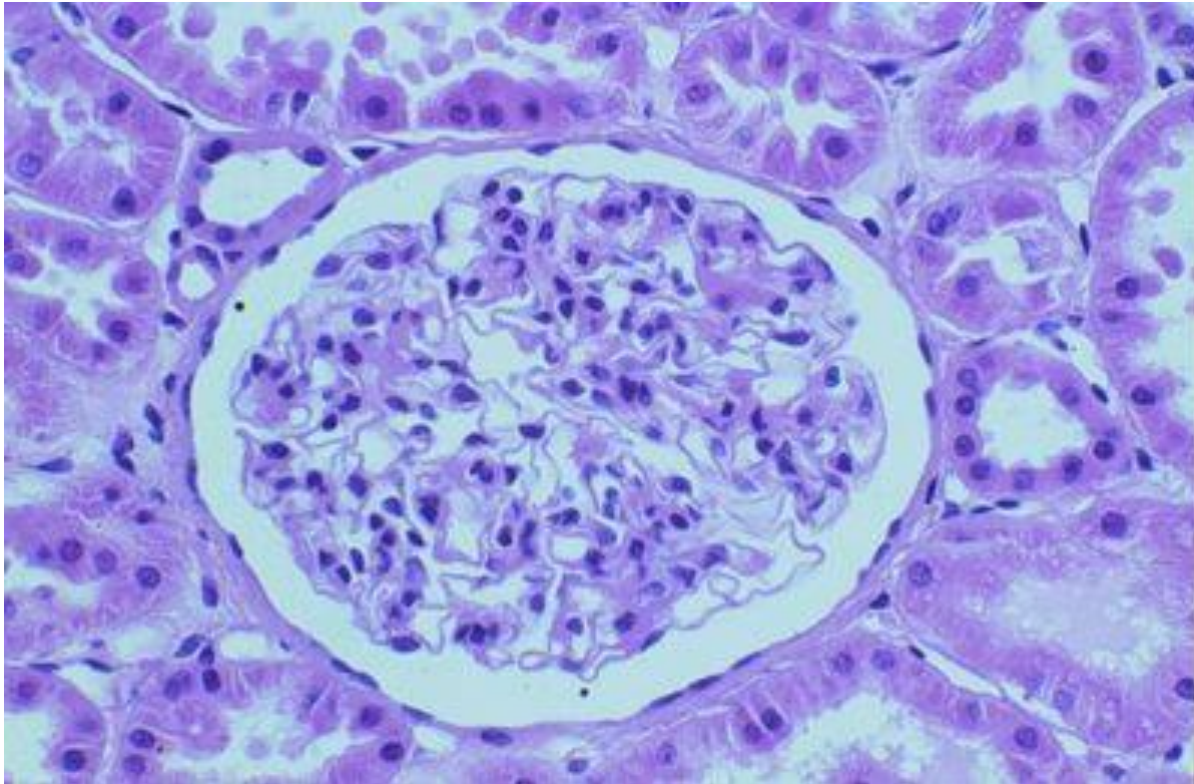


# Renal Cortex

glomeruli

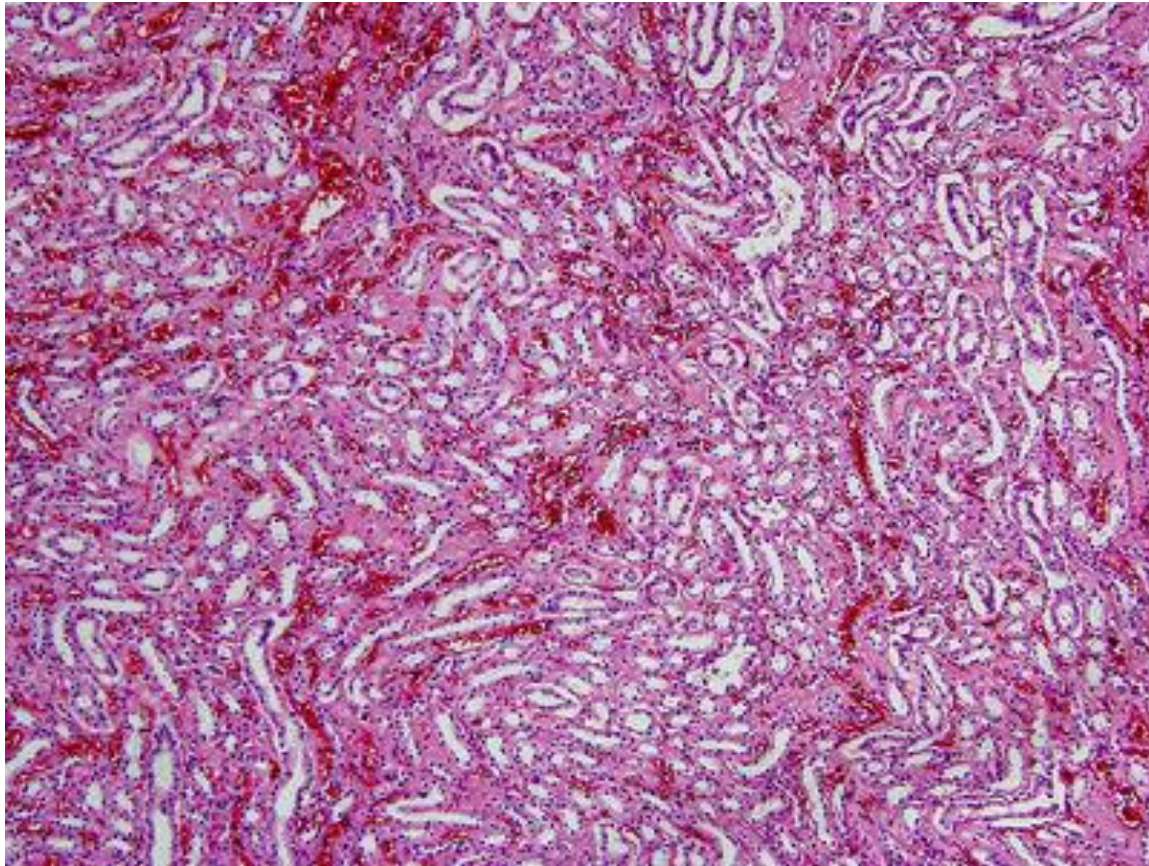


# Glomerulus

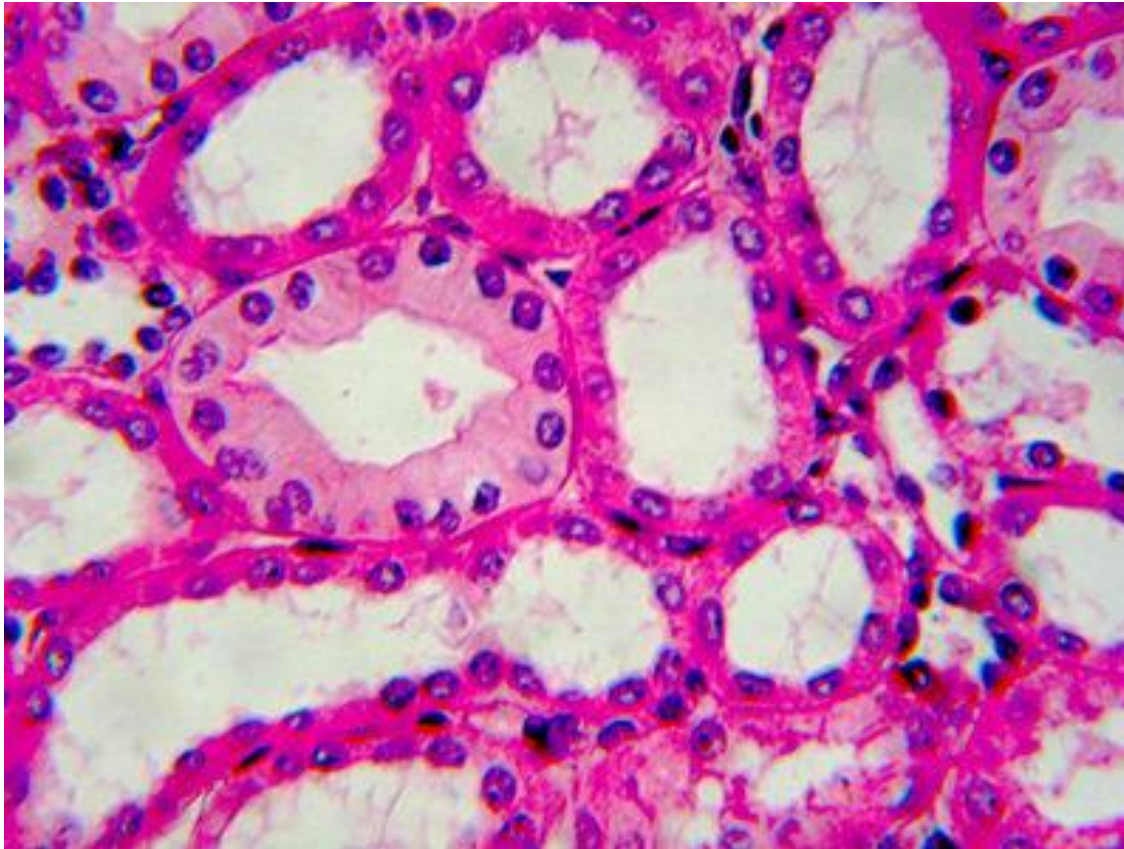




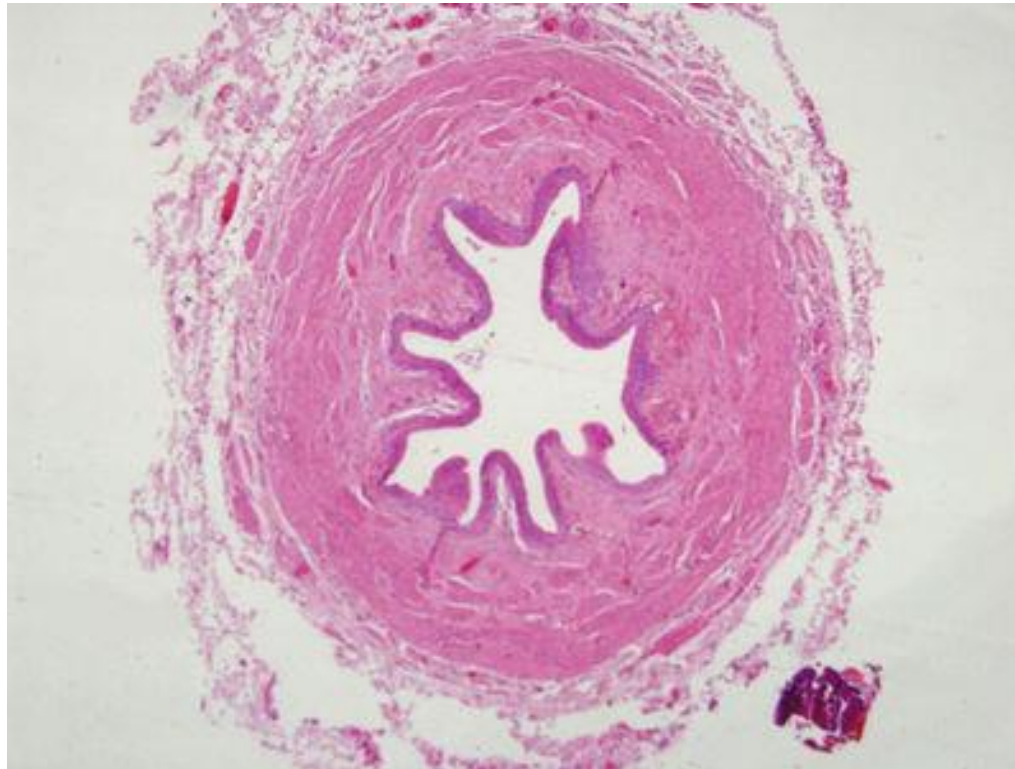
# Renal Medulla



# Renal Medulla (high power)



# Ureter (low power)

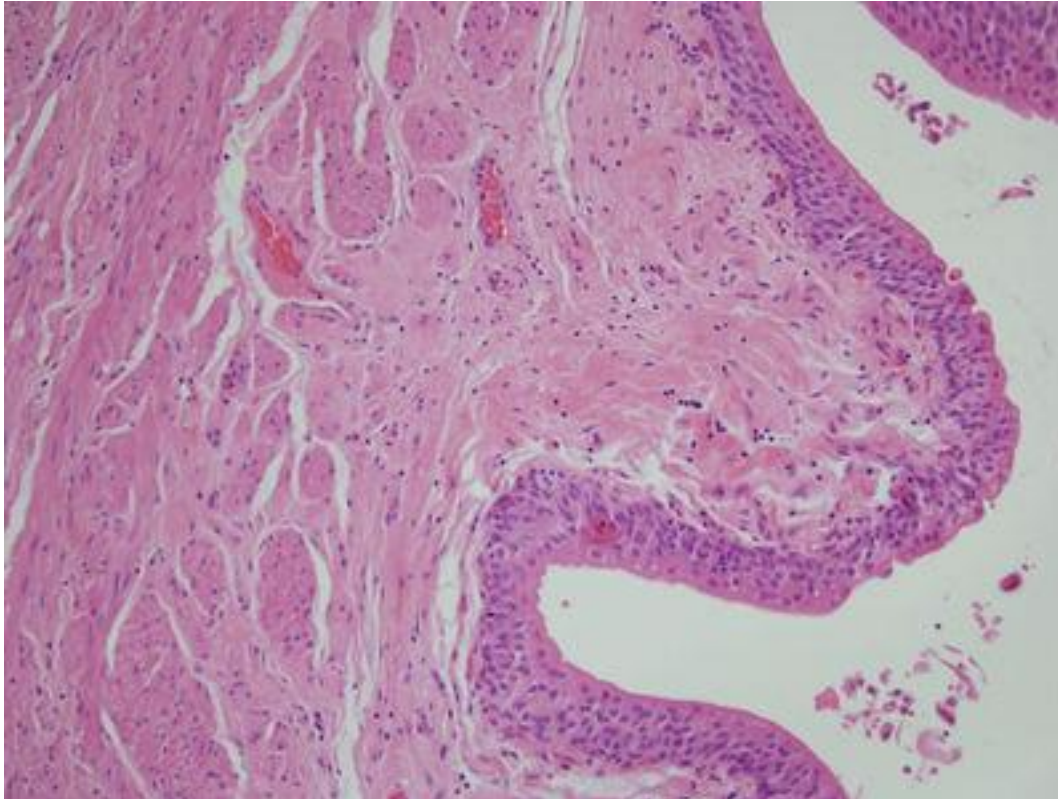




# Ureter (medium power)

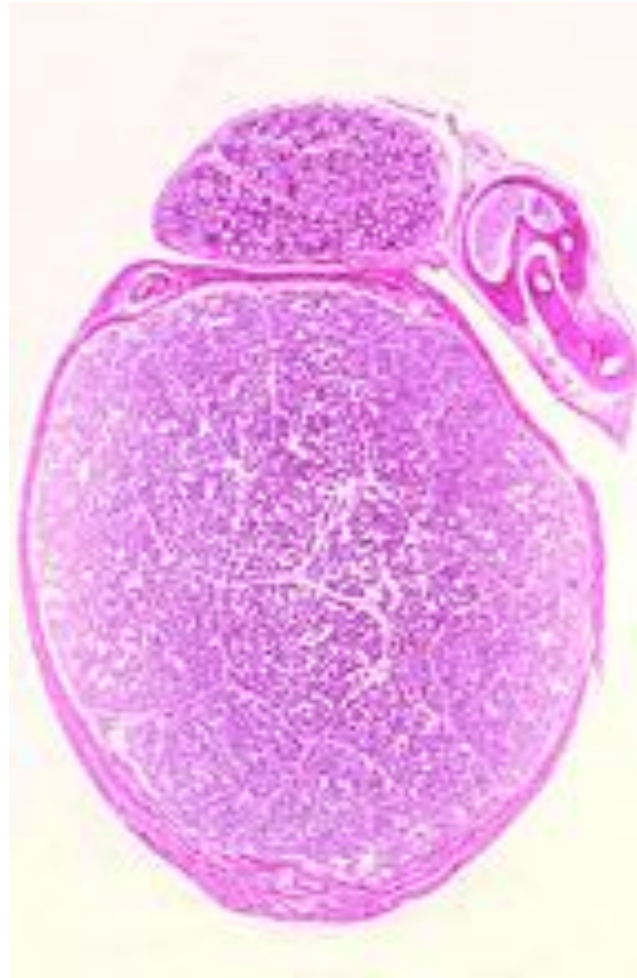


# Ureter (high power)

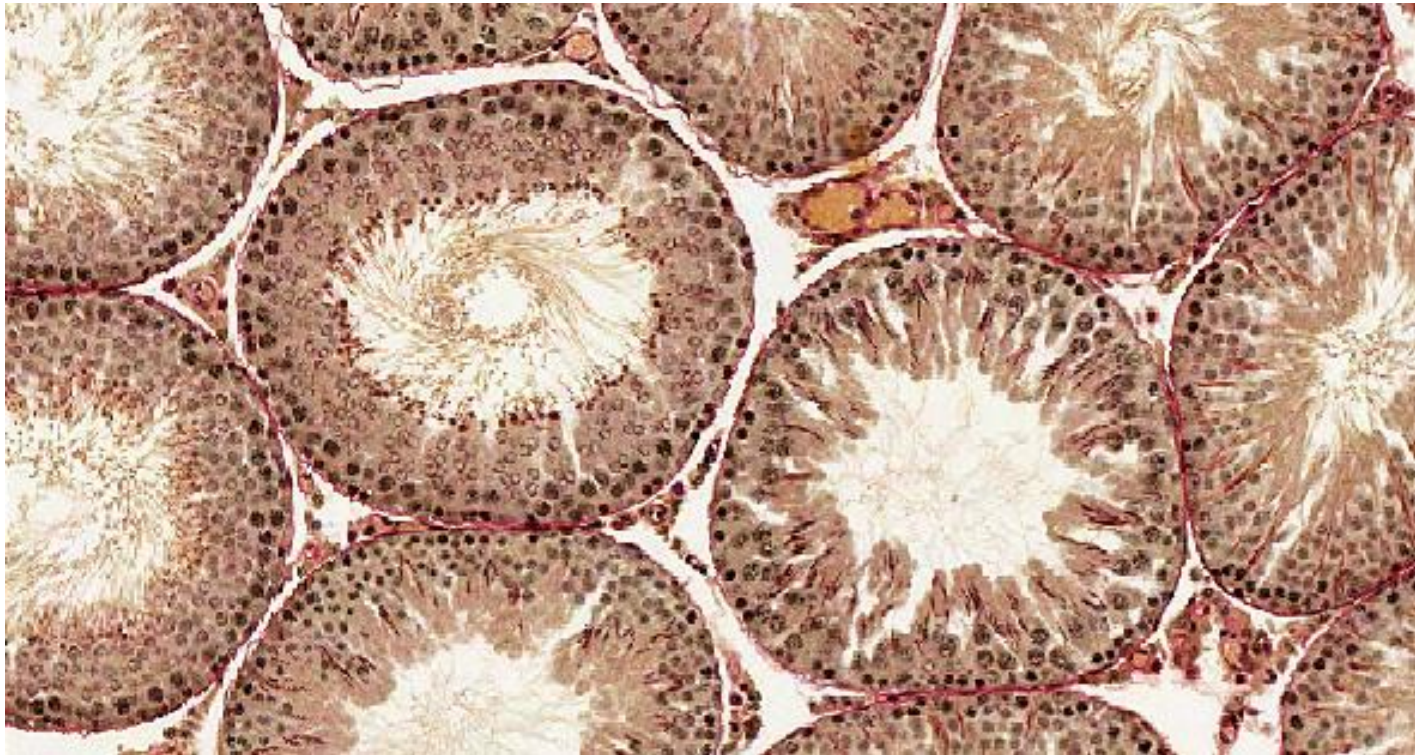




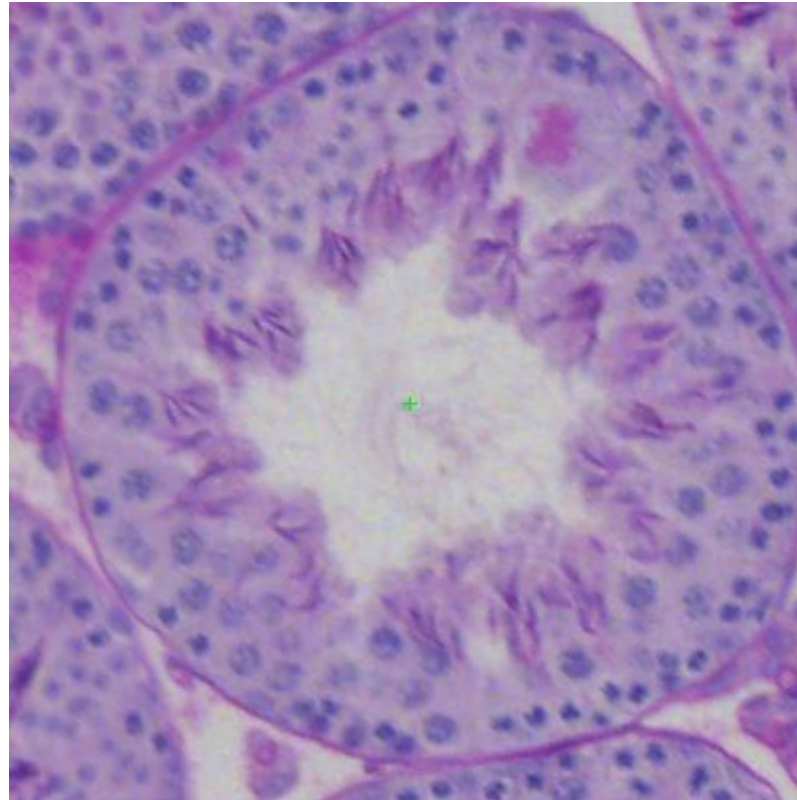
# Testis and epididymis (low power)



# Seminiferous tubules

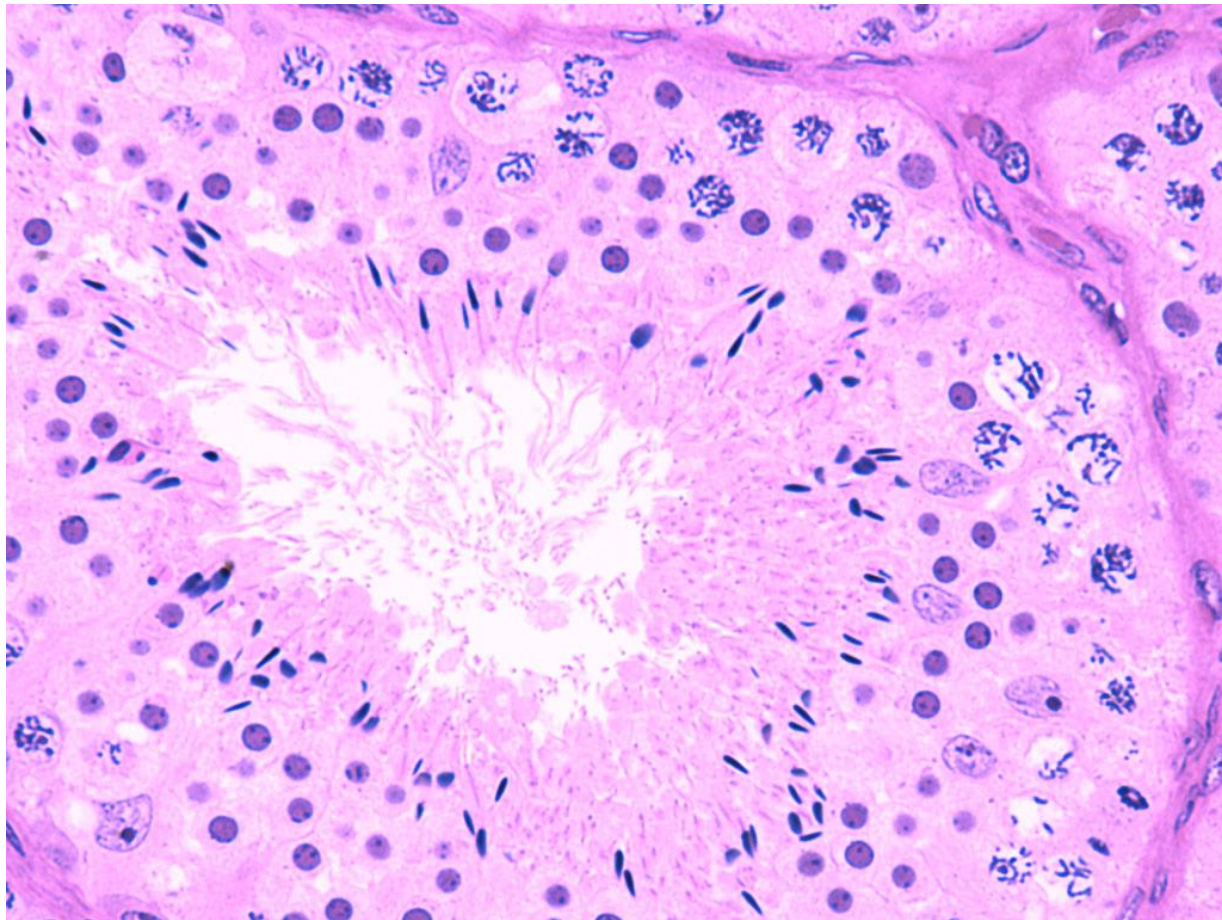


# Seminiferous tubule

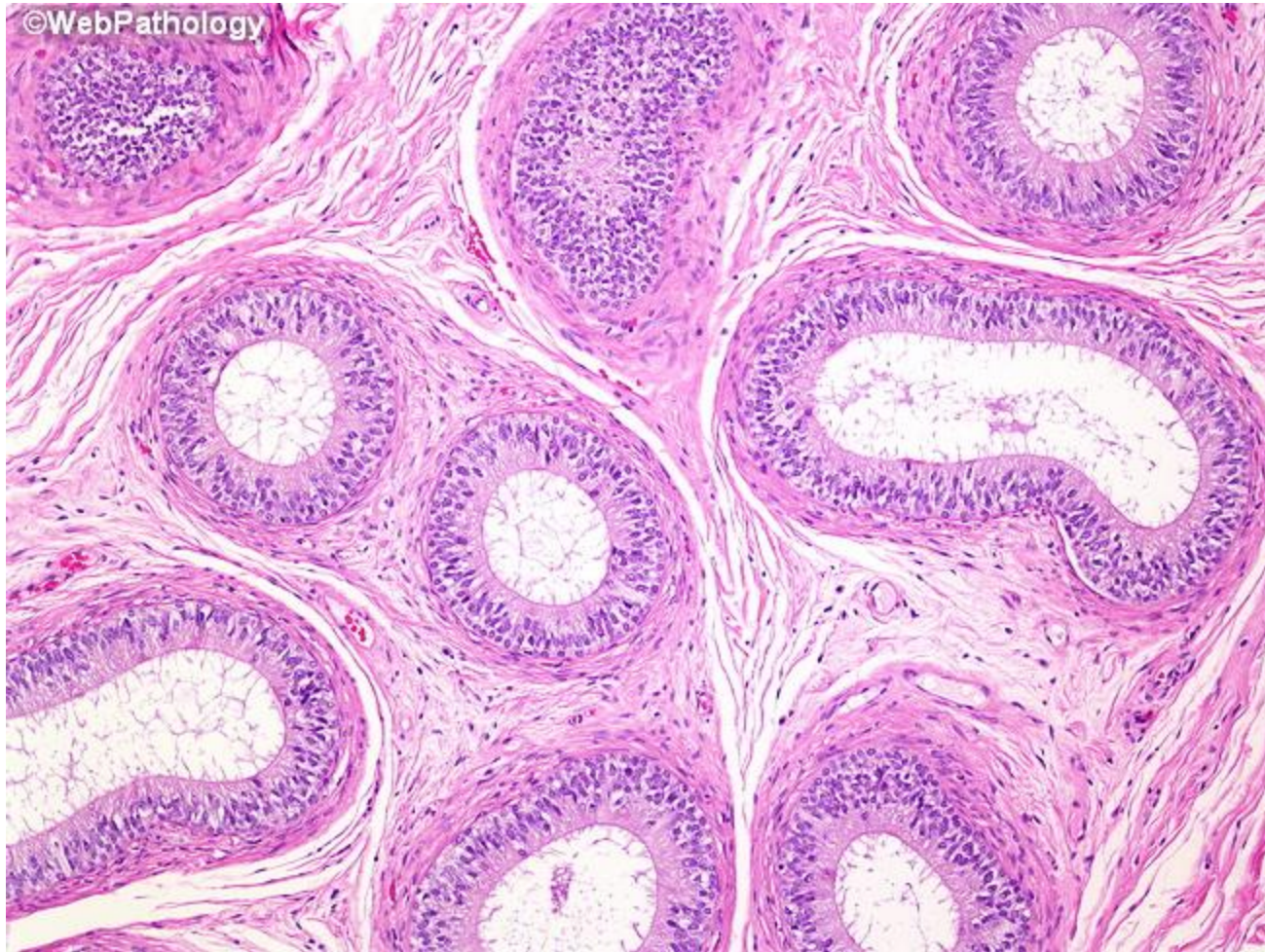




# Seminiferous tubule (high power)

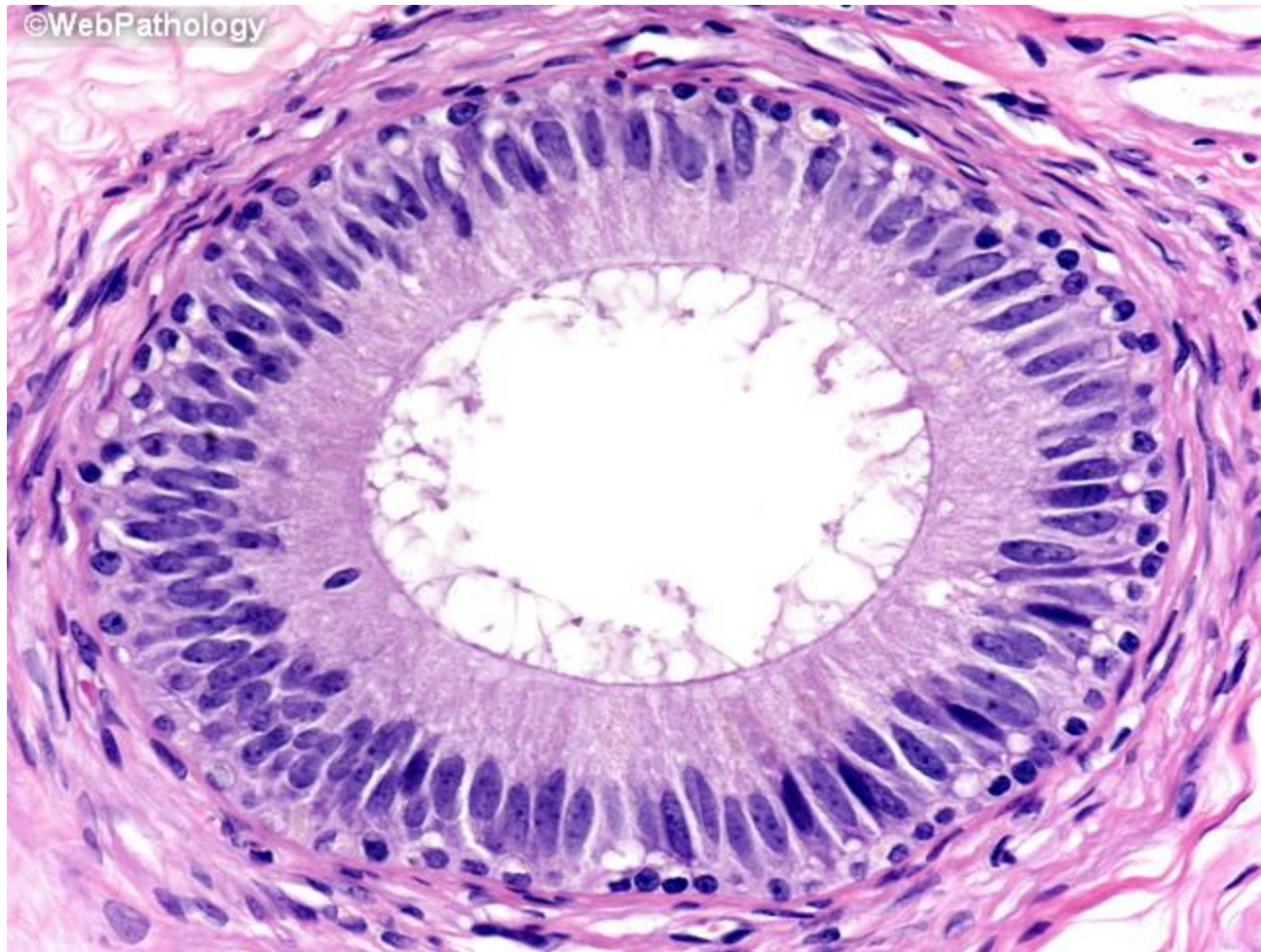


# Epididymis (low power)



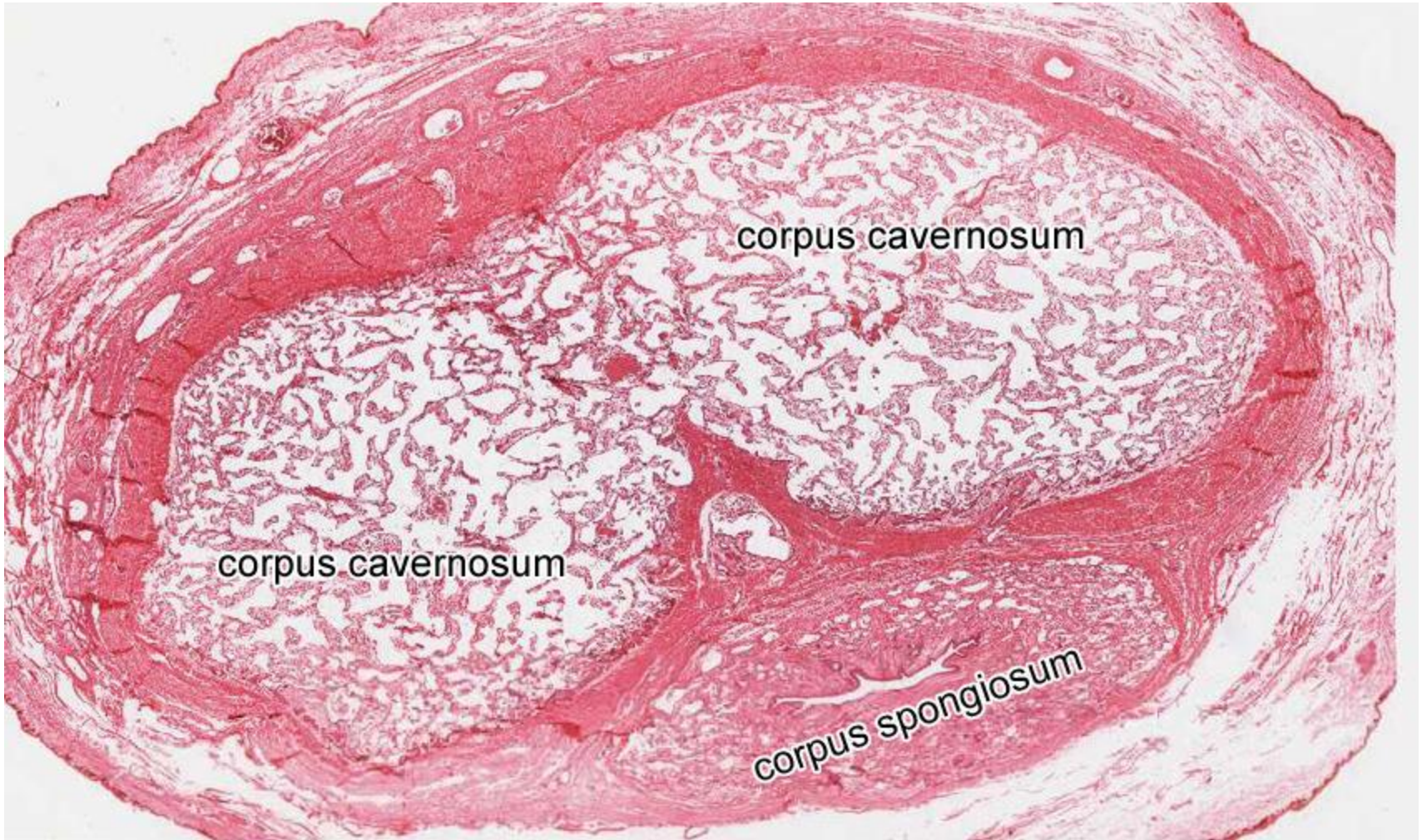


# Epididymis (high power)





# Penis (cross section)



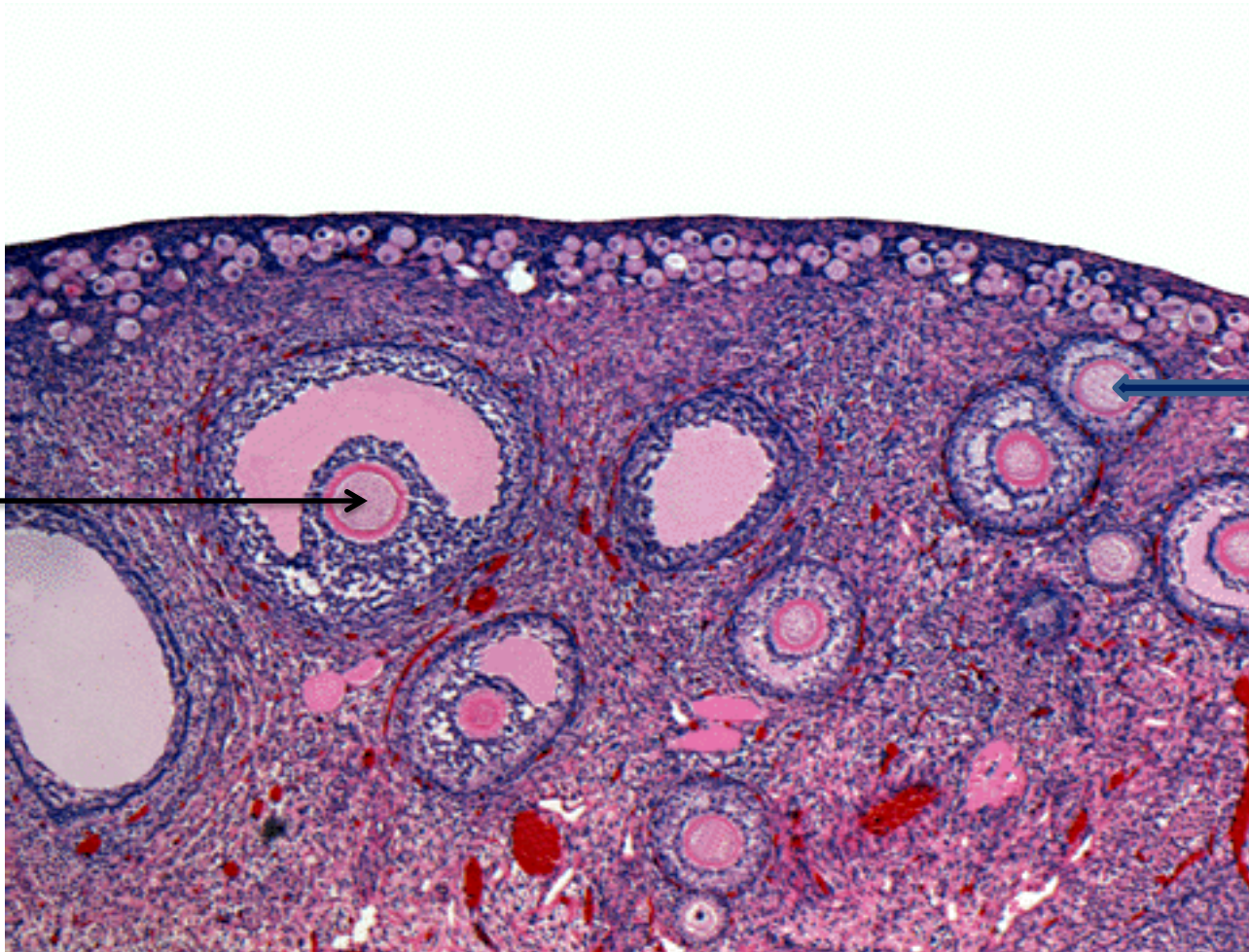


# Ovarian Cortex (low power)

Primary  
follicles

Oocyte in a  
Graffian  
follicle

Secondary  
follicle





# Graafian follicle (high power)

